

# How-to:

One-time setup configuration  
for Duplo DC-618 finisher  
integration with Fiery Impose



## Feature overview

Fiery® Impose is the most intuitive PDF-based sheet imposition software on the market. Tight integration with Fiery Command WorkStation®, makeready software, and prepress tools helps automate print job submission.

Fiery Impose templates allow users to save the most common job layouts to automate the imposition process. Templates can also include barcodes and registration marks. These are recognized by the barcode scanner in Duplo finishing equipment using the \* JobID \* format.

The barcodes and registration marks instruct the Duplo finisher on how to position blades, cutters, and creasers to finish the document.

Integrating Fiery Impose with Duplo finishers brings dramatic productivity gains to job preparation and finishing by automating the process. This saves time plus minimizes waste and errors.

This how-to provides a simplified one-time setup integration between Fiery Impose and the Duplo DC-618 Slitter/Cutter/Creaser.

This feature is compatible with the Duplo DC-618 Slitter/Cutter/Creaser nearline finisher.

## Objectives

- Configuration on the Duplo PC Controller.
  - Folder and permissions configuration for finishing integration on Windows.
  - Configuration on the Duplo PC Controller application.

- Configuration on the Fiery Command WorkStation application.

## Additional resources

This configuration must be done before using the How-To Guide: **Automate offline finishing with Duplo finishers - Part 3**.

For additional software downloads, training resources, and more, go to [Fiery Online Resources](#).

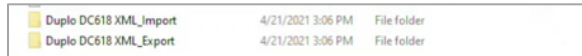
## Before you begin

- Open Fiery Command WorkStation **6.6.0.456** or later and connect to at least one Fiery server running **Fiery FS150**.
  - Check the Fiery Server system version on **General Info** of the **Device Center** area.
  - Check the current Fiery Command WorkStation version using the **Fiery Software Manager**.
- Have the **Duplo DC-618 PC Controller** installed and configured in the same network that the Fiery Server is connected.
- Use the Duplo DC-618 PC Controller (1.04) or later. Verify the version on the top header of the Controller Software.
- Verify the current Main and Panel PCB versions on the main unit:
  - Main PCB 1.05 or later
  - Panel PCB 1.05 or later
- Ensure that the printer and Fiery server have been calibrated before printing any output.

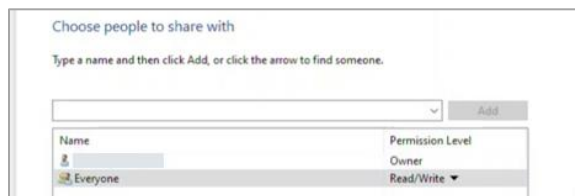
## On the Duplo PC Controller Windows computer

Folders and permissions configuration for finishing integration on Windows.

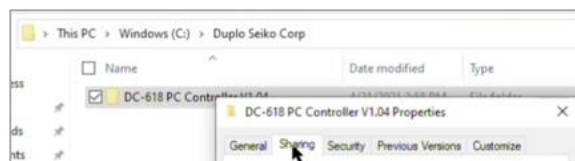
1. Create a new folder on **C: drive** for **'Duplo DC618 XML\_Import.'**
2. Create a new folder on **C: drive** for **'Duplo DC618 XML\_Export.'**



3. Share the **'...Import'** folder for **'everyone'** user and change the permission to **'Read/Write.'**
4. Share the **'...Export'** folder for **'everyone'** user and change the permission to **'Read/Write.'**



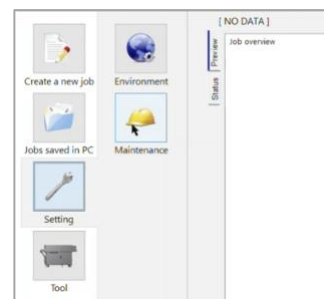
5. Locate the folder **'Duplo Seiko Corp'** on C: drive.
6. Locate the folder **'DC-618 Controller V1.04.'**



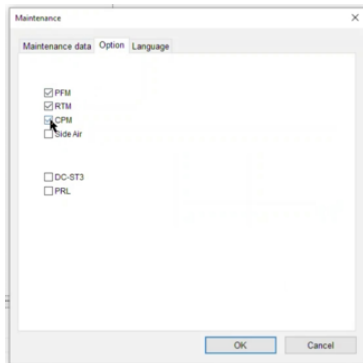
7. Share it with **'everyone'** user and change permission to **'Read/Write.'**

Open the **Duplo-DC 618 PC Controller** application.

1. Select the **'Setting'** icon.
2. Select the **'Maintenance'** icon.
3. Enter the password 630304 and click on the **'Yes'** button.
4. In the Maintenance window switch to the **'Option'** tab.



Select the checkbox options for: **'PFM,' 'RTM'** and **'CPM.'** Press OK to confirm.

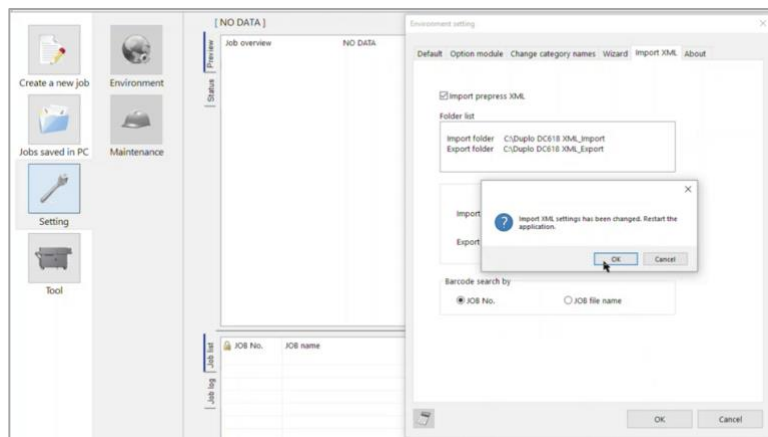


**PFM:** Manual Perforation Module performs continuous perforations along the length of the sheet. Ideal for coupon and ticket applications.

**RTM:** Rotary Tool Module performs perforations, micro-perforations, and scores along the length of the sheet. Tools are positioned automatically and can perform strike perforations.

**CPM:** Cross Perforation Module performs perforations and micro-perforations along the width of the sheet. Tools are positioned

5. Select the **'Environment'** icon in the **'Setting'** area.



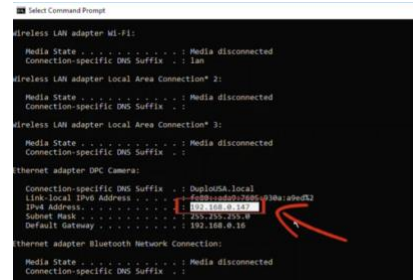
6. In the **Environment** window change to the **'Import XML'** tab.
7. Then select the **'Import Prepress XML'** checkbox option.
8. And click on the **'Select folder'** button for the **'Import folder'** option.
9. Locate the folder **'Duplo DC618 XML\_Import'** on the **C: drive** and click **'OK'** to confirm.
10. Do the same for the **Export folder** option, select the **'Export folder'** button.
11. Locate the folder **'Duplo DC618 XML\_Export'** on the **C: drive** and click **'OK'** to confirm.
12. Then click on the **'OK'** button to **exit** the Environment window.

A new message window will appear asking to confirm that the XML settings have been changed and the application needs to Restart.

13. Click on the **'OK'** button to confirm.

How to find out the Finisher Controller IP number on Windows.

1. Open the Windows **'Command'** tool using the **'Search'** function.
2. Type **'ipconfig'** and hit the **'Enter'** key.
3. Write down the **IPv4 address**, for instance: 192.168.0.147
4. Exit closing the **'Command'** window.

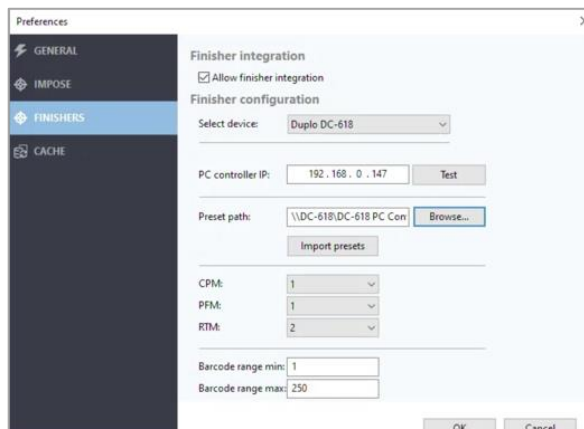


## On the Fiery Command WorkStation application

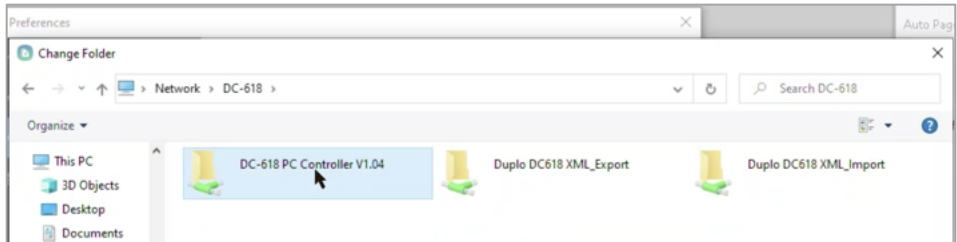
**Right click** on any job on the **'Held'** queue and select the **'Impose'** option from the context menu.

On the **Fiery Impose** window

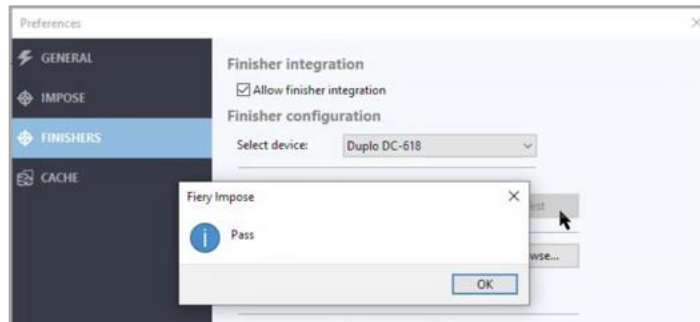
1. In the new Impose window, select the **'Edit'** menu.
2. And then select the **'Preferences...'** option.
3. Choose the **'Finishers'** tab from the left.
4. Select the **'Allow finisher integration'** checkbox.
5. Click on the **'Select device'** combo box and select the **'Duplo DC-618'** from the list.
6. On the **'PC Controller IP:'** enter the **IPv4 address** for the Duplo DC-618 PC Controller Computer.



7. On the 'Preset path:' area, click on the 'Browse...' button and locate the 'DC-618 PC Controller V1.04' shared folder in your network.
8. Then click on the 'Select Folder' to confirm and exit the window.



9. Now, click on the 'Test' button located on the PC Controller IP area to test the connection between them.



10. You should see a window saying 'Pass' if the connection is correct.

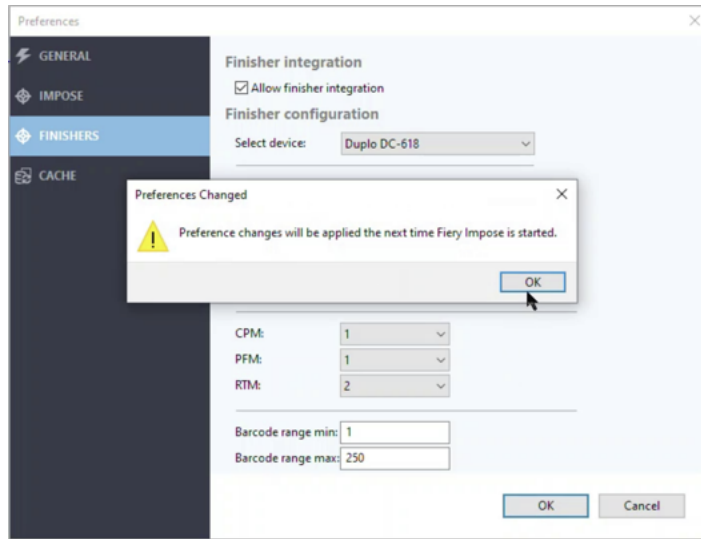
**NOTE:** If you receive a 'Fail' message, you need to verify if your login credential on this computer can access the shared folders on the computer where the Duplo Controller is installed. You can check the Preset path with a File Explorer.

In the File Explorer's search field type '\\,' and then, type the Duplo Controller computer IP address instead of the UNC path location. For instance: \\192.168.0.147, and hit the **Enter** key to confirm.

A new Windows Security popup may appear requesting the network domain credentials. Enter the user and password and click **'OK'** to confirm.

Return to Fiery Impose's preference window and click the **'Test'** button again. You should receive the **'Pass'** confirmation message.

11. Then click on the Fiery Impose **'OK'** button to finish.
12. A new message window shows 'Preferences changes will be applied the next time that the Fiery Impose is started.' Click on the 'OK' button to confirm.



13. And then **close** the Fiery Impose window.

Note: If you are using a virtual Fiery for demo purpose, the Duplo PC Controller can be installed on the same virtual Fiery. Use **127.0.0.1** as IP address for the PC controller machine. A pop-up window message may display when opening Fiery Impose: "Finisher is off-line." This is because the Fiery server is not physically connected to a real finisher controller equipment. Just click **OK** to continue.

## On the Duplo DC-618 Control Panel

Make sure that both 2 Digit Barcode and 3 Digit Barcode are enabled on the DC-618 unit.

- On DC-618 Main Unit "Service Mode" under "H98 Special" and verify 2 Digit Barcode "1" and 3 Digit Barcode "1" are enabled. By default, 2 Digit Barcode is enabled.



## EFI fuels success.

We develop breakthrough technologies for the manufacturing of signage, packaging, textiles, ceramic tiles, and personalized documents, with a wide range of printers, inks, digital front ends, and a comprehensive business and production workflow suite that transforms and streamlines the entire production process, increasing your competitiveness and boosting productivity. Visit [www.efi.com](http://www.efi.com) or call 650-357-3500 for more information.



Nothing herein should be construed as a warranty in addition to the express warranty statement provided with EFI products and services. The APPS logo, AutoCal, Auto-Count, Balance, BESTColor, BioVu, BioWare, ColorPASS, Colorproof, ColorWise, Command WorkStation, CopyNet, Cretachrom, Cretaprint, the Cretaprint logo, Cretaprinter, Cretaroller, Digital StoreFront, DirectSmile, DocBuilder, DocBuilder Pro, DockNet, DocStream, DSFdesign Studio, Dynamic Wedge, EDOX, EFI, the EFI logo, Electronics For Imaging, Entrac, EPCount, EPPhoto, EPRegister, EPStatus, Estimate, ExpressPay, FabriVU, Fast-4, Fiery, the Fiery logo, Fiery Driven, the Fiery Driven logo, Fiery JobFlow, Fiery JobMaster, Fiery Link, Fiery Navigator, Fiery Prints, the Fiery Prints logo, Fiery Spark, FreeForm, Hagen, Inkintensity, Inkware, LapNet, Logic, Metrix, MicroPress, MiniNet, Monarch, OneFlow, Pace, Pecas, Pecas Vision, PhotoXposure, PressVu, Printcafe, PrinterSite, PrintFlow, PrintMe, the PrintMe logo, PrintSmith, PrintSmith Site, PrintStream, Print to Win, Prograph, PSI, PSI Flexo, Radius, Remoteproof, RIPChips, RIP-While-Print, Screenproof, SendMe, Sincolor, Splash, Spot-On, TrackNet, UltraPress, UltraTex, UltraVu, UV Series 50, VisualCal, VUTEK, the VUTEK logo, and WebTools are trademarks of Electronics For Imaging, Inc. and/or its wholly owned subsidiaries in the U.S. and/or certain other countries. All other terms and product names may be trademarks or registered trademarks of their respective owners, and are hereby acknowledged.